

## Tonleiterübungen

B-Dur Tonleiter - Beginn immer 1 Ton höher

The image displays eight staves of musical notation for B major scale exercises. Each staff is in bass clef and 2/4 time. The exercises are as follows:

- Staff 1: B2, C3, D3, E3, F3, G3, A3, B3, A3, G3, F3, E3, D3, C3, B2.
- Staff 2: C3, D3, E3, F3, G3, A3, B3, C4, B3, A3, G3, F3, E3, D3, C3.
- Staff 3: D3, E3, F3, G3, A3, B3, C4, D4, C4, B3, A3, G3, F3, E3, D3.
- Staff 4: E3, F3, G3, A3, B3, C4, D4, E4, D4, C4, B3, A3, G3, F3, E3.
- Staff 5: F3, G3, A3, B3, C4, D4, E4, F4, E4, D4, C4, B3, A3, G3, F3.
- Staff 6: G3, A3, B3, C4, D4, E4, F4, G4, F4, E4, D4, C4, B3, A3, G3.
- Staff 7: A3, B3, C4, D4, E4, F4, G4, A4, G4, F4, E4, D4, C4, B3, A3.
- Staff 8: B3, C4, D4, E4, F4, G4, A4, B4, A4, G4, F4, E4, D4, C4, B3.

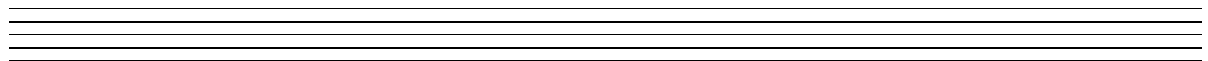
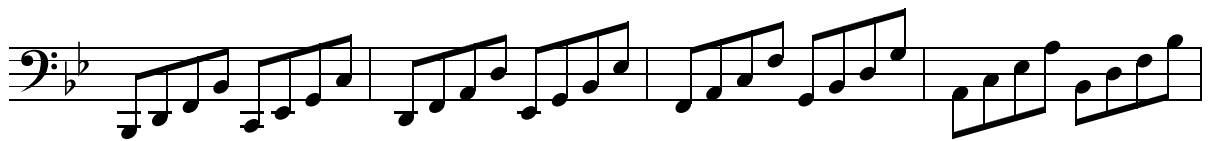
## Tonleiterübungen

Dur Tonleiter im Quintenzirkel - (Wiederholungen jeweils 3x)

The image displays 12 staves of musical notation, each representing a major scale in a different key from the circle of fifths. Each staff begins with a bass clef and a 4/4 time signature. The scales are: 1. C major (no sharps or flats), 2. F major (one flat), 3. C major (no sharps or flats), 4. G major (one sharp), 5. D major (two sharps), 6. A major (three sharps), 7. E major (four sharps), 8. B major (five sharps), 9. F major (one flat), 10. C major (no sharps or flats), 11. G major (one sharp), 12. D major (two sharps). Each exercise consists of three measures of eighth notes, with the first measure starting on the tonic and the second measure starting on the dominant. The third measure is a half note on the tonic. Each exercise is repeated three times, as indicated by the instruction above.

# Tonleiterübungen

Beispiele für Intervalle am Beispiel B-Dur



# Tonleiterübungen

## Chromatische Übungen

